

# 2015 Annual Report

## Transforming Community Safety and Well-being in Greater Sudbury



# Our Shared Commitment

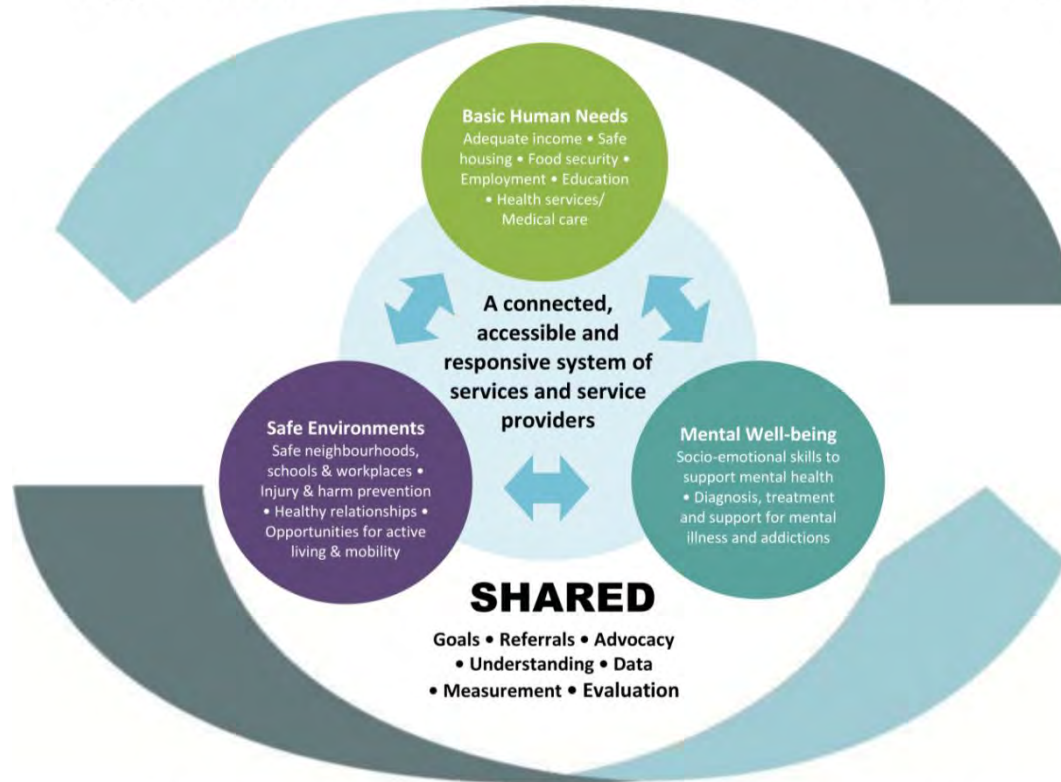
Our Goal; to transform Community Safety and Well-being in Greater Sudbury

In 2015, Greater Sudbury Police Service focused on;

- Collaborative partnerships
- Proactive, risk driven policing initiatives
- High risk and/or elevated risk situations



# Opportunities for Community Safety and Well-being



## Creating Conditions for a Vital and Inclusive Community



Community **Mobilization** Sudbury  
Mobilisation **Communautaire** Sudbury  
Weweni **EnjiNagidwendaagozing**



Community  
Drug Strategy

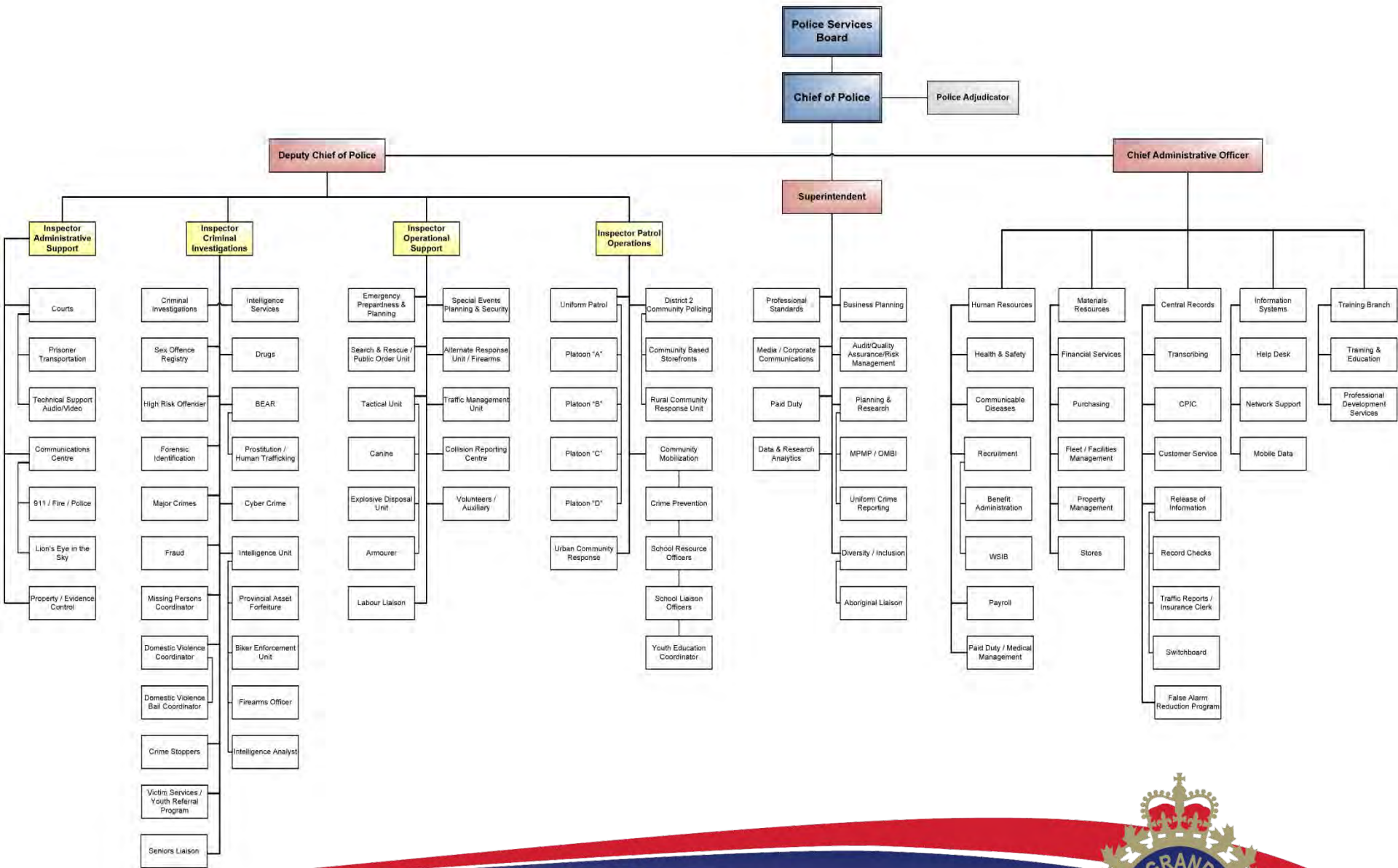
# Community Safety Personnel Program

- In 2015, eight Community Safety Personnel positions were created
  - Youth Safety Coordinator
  - Crime Prevention Coordinator
  - Missing/Vulnerable Person Coordinator
  - Crime Stoppers/Senior Liaison Coordinator
  - Alternative Response Coordinator (3)
  - Corporate Communications Coordinator



# Community Engagement





# Corporate Services

## Financial Overview

Description	Annual Budget	Year End Actual	% age Change
Salaries & Benefits	\$48,254,026	\$48,380,218	0.26
Operating Costs	\$6,365,925	\$6,490,195	1.95
Contribution to Reserves/Capital	\$2,780,141	\$3,032,307	9.07
Revenue	(\$4,872,117.72)	(\$5,429,720.77)	11.44
Net Total	\$52,527,974	\$52,472,999	(0.10)



# Corporate Services

## Recruitment and Promotions





# Corporate Services

## Human Resources

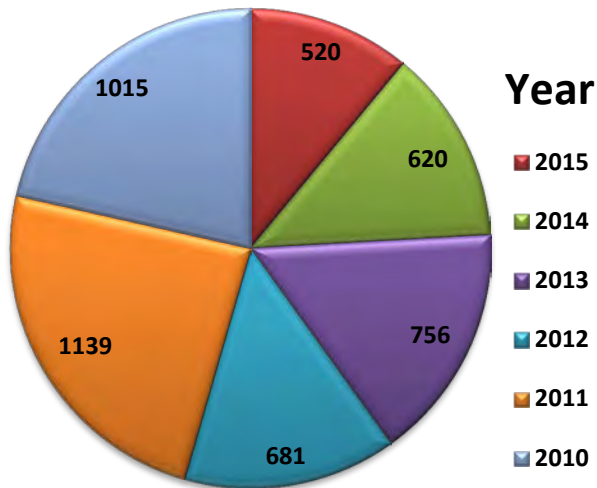
### ESSENTIAL INGREDIENTS OF EMPLOYEE WELLNESS



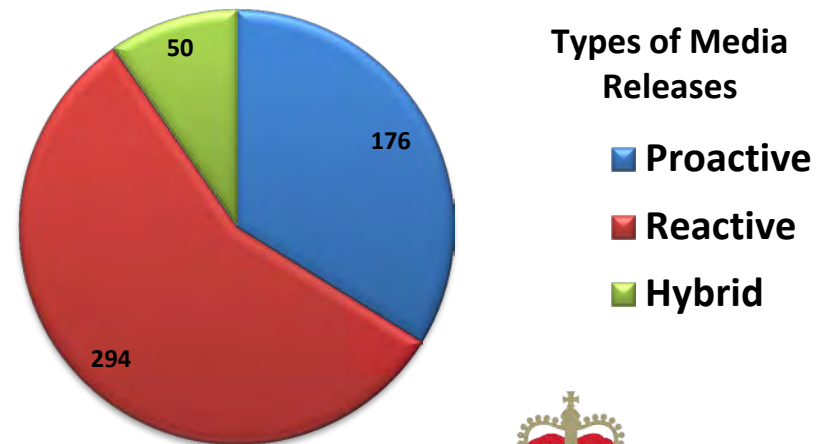
# Executive Services Corporate Communications



### Media Releases Issued



### 2015 Media Releases



# Executive Services Special Projects



# Administrative Support Communications Centre

In the course  
of 2015...



59,435  
9-1-1  
calls  
were  
received



45,000 Police  
incidents were  
dispatched by  
Communications  
Staff



4,721 fire  
incidents were  
dispatched by  
Communications  
Staff

## False Alarm Program

4458 Total alarm calls

3484 Total cancelled

26 Total valid

948 Total attended



# Administrative Support Courts Branch

- ✓ Over **4000** summons/subpoenas served
- ✓ **3820** crown briefs were prepared
- ✓ **375** custodies safely handled through court
- ✓ **1782** screening requests processed
- ✓ **503** DNAs obtained as a result of court orders
- ✓ **17** escorts of custodies requiring mental health assessments
- ✓ **15** warrant returns from other jurisdictions

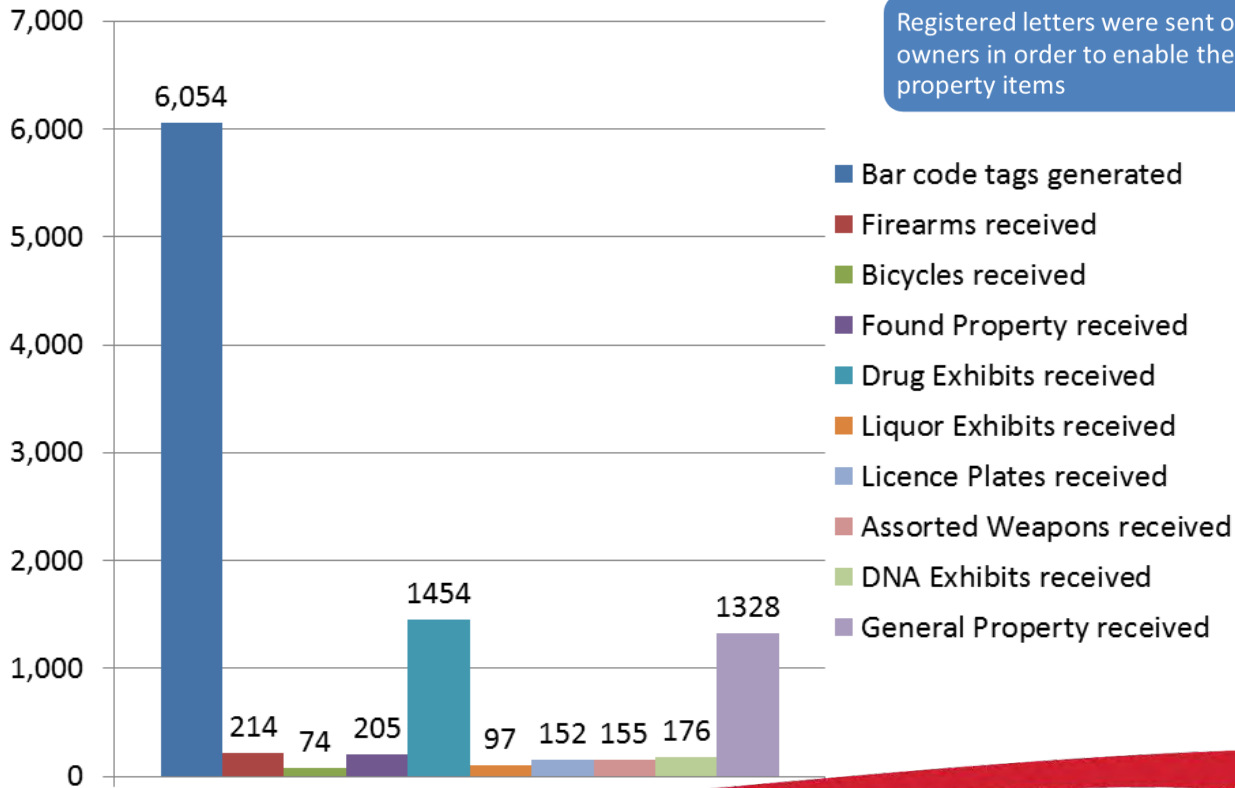
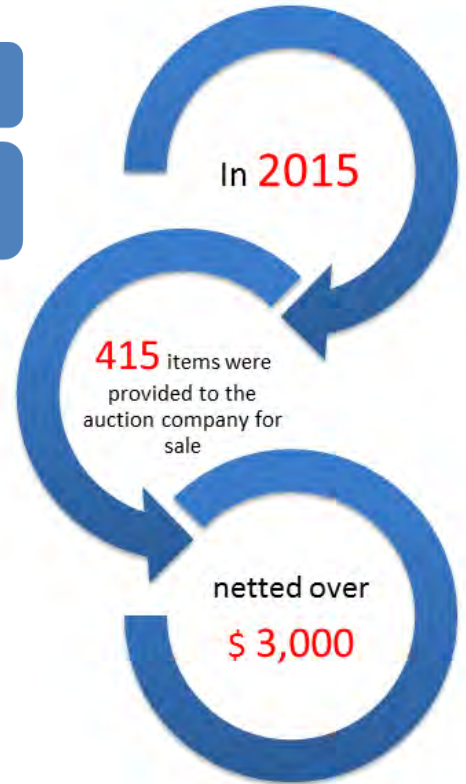


# Administrative Support

## Property and Evidence Control Branch

Approximately 12,108 total items were submitted to Property.

Registered letters were sent out to 150 owners in order to enable the return of property items



# Criminal Investigations

## General Investigations, Domestic Violence Unit & Major Crimes Section

- General Investigations Section involved in hundreds of arrests
  - 500 Criminal Charges laid
- Domestic Violence Unit partnered with Domestic Violence Youth Committee
  - “Boys 4 Real” to boys in Grade 7 and 8
- Major Crimes Section
  - Investigated two homicides
  - Four on-going cold cases

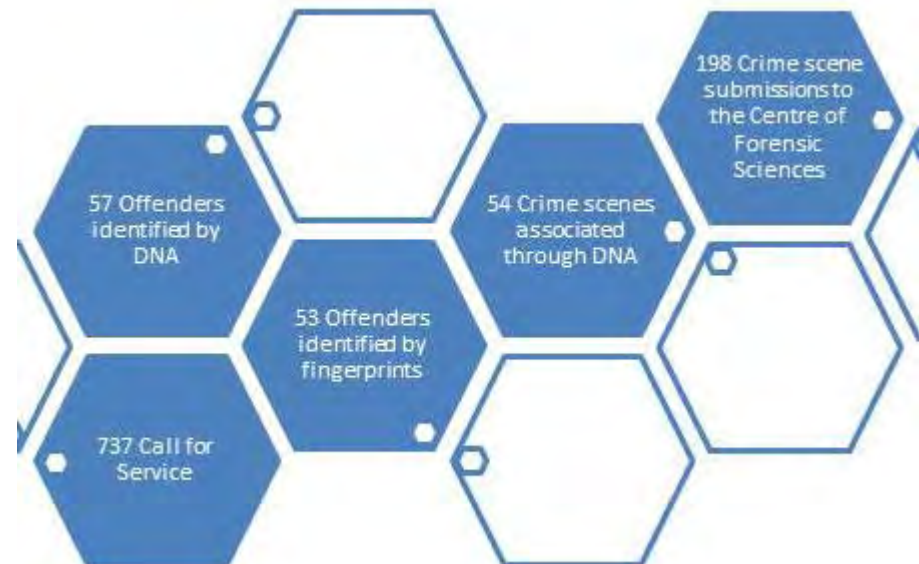


# Criminal Investigations

## Cyber Crime Unit



## Forensic Identification Unit

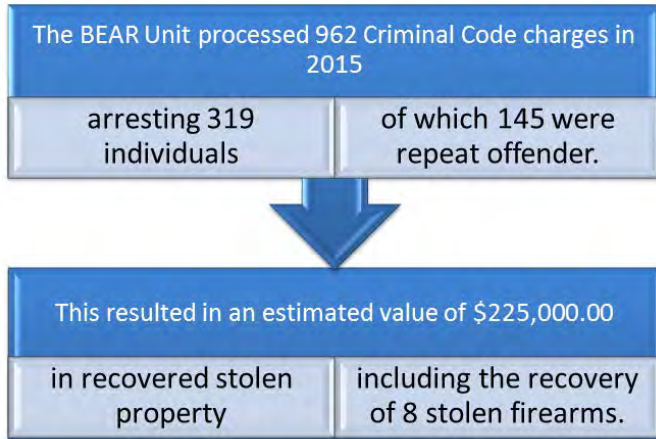




# Criminal Investigations

## Break Enter and Robbery Unit

## Drug Enforcement Unit



## 2015 Statistics

The Drug Enforcement Unit arrested 205 individuals in relation to 686 drug-related charges.	This resulted in \$533,532.00 worth of drugs being seized.	Three Drug Enforcement Officers qualified as Drug Experts and generated 26 reports at the request of the courts.
---	--	--



# Operational Support

Tactical Unit, K9 Unit and Traffic Management Unit



# Operational Support

## Volunteer Office and Auxiliaries

**JOIN OUR TEAM!**



**GREATER GRAND SUDBURY POLICE**

BECOME AN  
**EVENT VOLUNTEER**  
WITH THE  
**GREATER SUDBURY POLICE SERVICE**

**OUR COMMUNITY ~ OUR COMMITMENT**



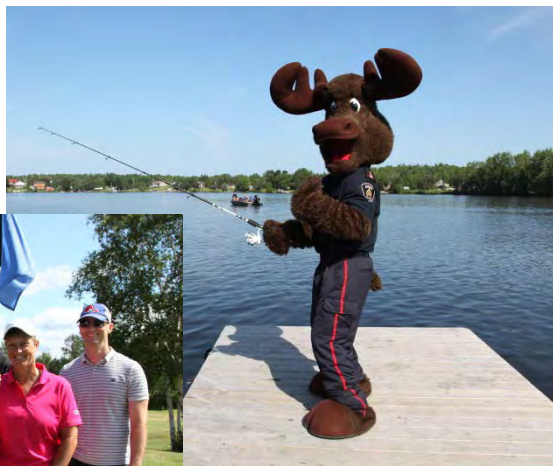
# Patrol Operations

## Uniform Patrol and Domestic Violence Investigators



# Patrol Operations

## Community Mobilization Unit and Rural Community Response Unit



# Thank you

Our Goal; to transform Community Safety and Well-being in Greater Sudbury

In 2015, Greater Sudbury Police Service focused on;

- Collaborative partnerships
- Proactive, risk driven policing initiatives
- High risk and/or elevated risk situations

