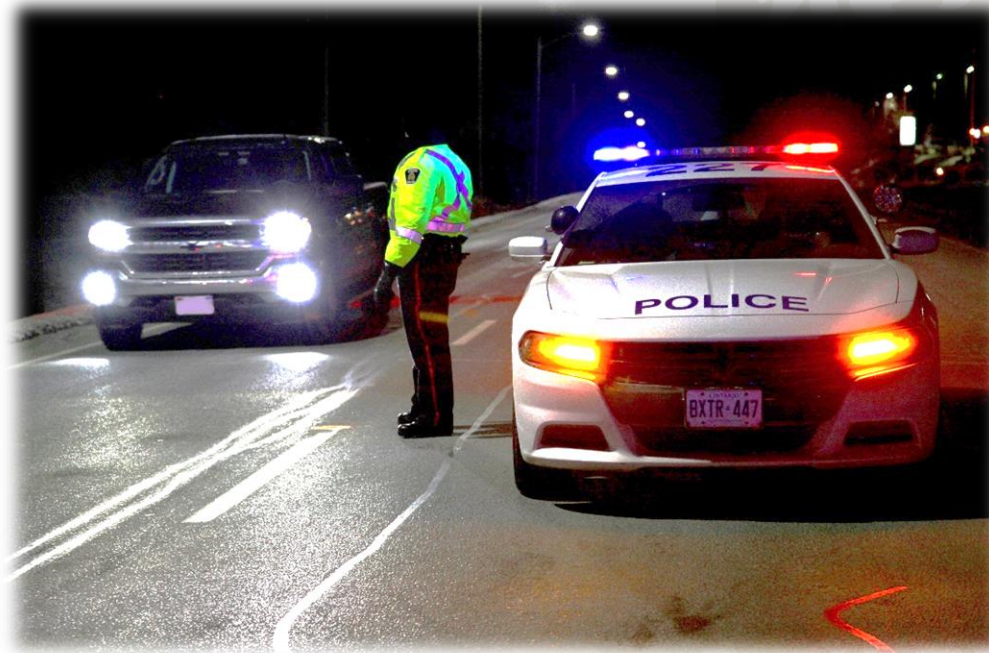


# Alcohol and Drug Impaired Driving



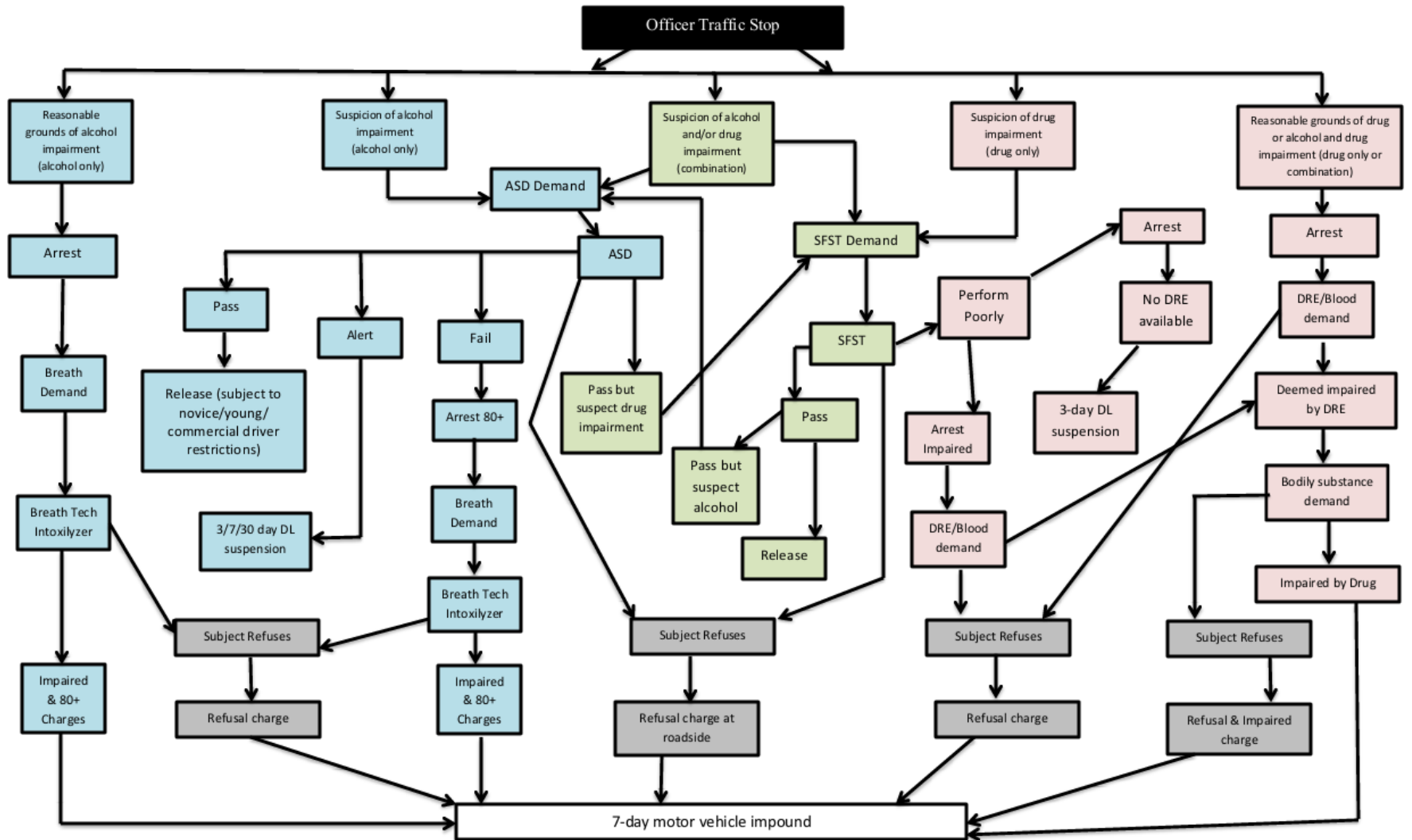
GSPS Traffic Management Unit  
Greater Sudbury Police Services Board  
Wednesday, June 26<sup>th</sup>, 2024



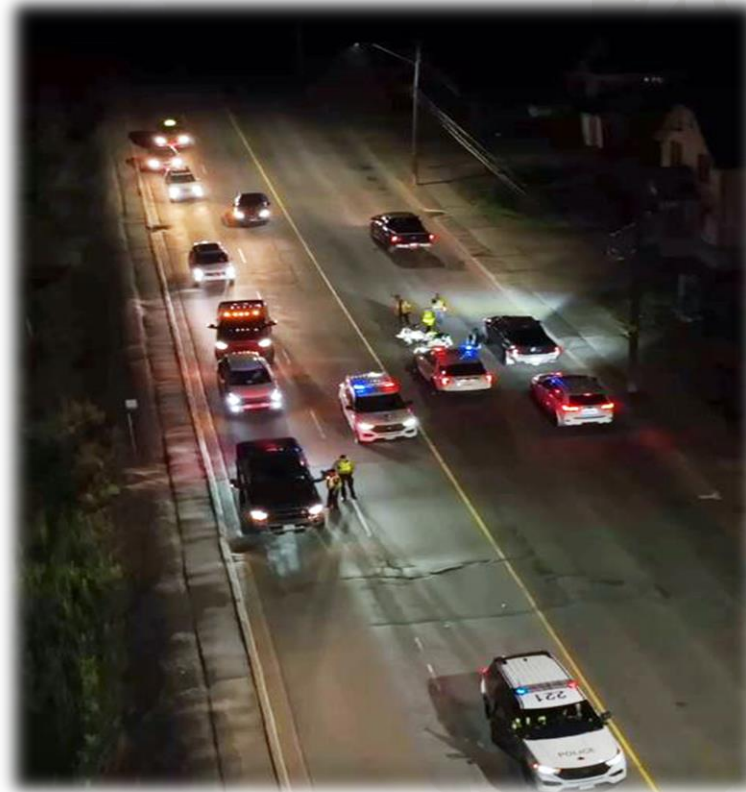
# What is Impaired Driving?

- Sec. 320.14 of the Criminal Code
- Ability to operate a conveyance impaired to any degree slight to great
- Per Se offences (blood alcohol/drug concentrations)





# Testing for Impaired by Alcohol



# Testing for Impaired by Alcohol

- Use of approved roadside screening device:



# Testing for Impaired by Alcohol



## APPENDIX A

### Summary of differences between ASD demands under s. 320.27(1)(b) and (2)

Requirements of a Conventional ASD Demand under s. 320.27(1)(b)	Requirements of a MAS ASD Demand under s. 320.27(2)
Reasonable suspicion that subject has operated (or had care or control) of a <b>conveyance</b> within the preceding three hours	Subject must be operating (or have care or control) of a <b>motor vehicle</b> when the ASD demand is made
Reasonable suspicion of alcohol in the body	
Demand must be made immediately upon suspicions being formed	Demand must be made immediately
ASD must be administered immediately following demand	ASD must be administered immediately following demand
If no ASD on scene, it may be brought to scene, provided "immediacy" requirement is complied with	ASD must be on scene and in demanding officer's possession when demand is made
No comparable statutory provision. However, officers must always be acting lawfully when stopping motor vehicles and engaging in screening measures.	Express statutory requirement that demanding officer must be in the lawful exercise of powers under federal or provincial statute or at common law



# Testing for Impaired by Alcohol

- ▶ **Pass:** 0 - 49 mg of alcohol in 100 ml of blood
- ▶ **Warn Range:** Driver produces between 50 - 99 mg of alcohol in 100 ml of blood - In Ontario this results in 3-day driver's licence suspension.
- ▶ **Fail:** Driver produces > 100 mg of alcohol in 100 ml of blood → Arrest for Operating with 80+ mg/100 ml





# Testing for Impaired by Drug and Alcohol



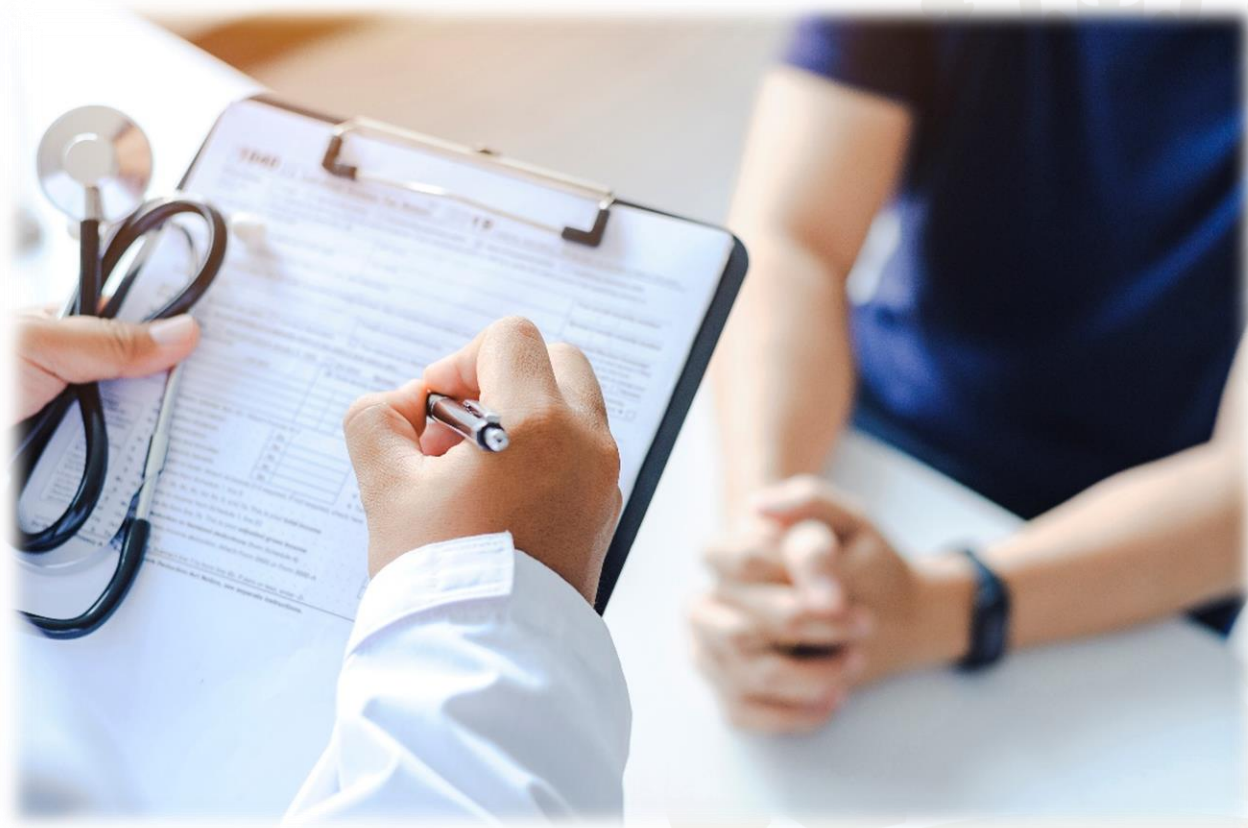
# Testing for Impaired by Alcohol



# Intoxilyzer 8000 C



# What happens if driver can't blow?



# What is a drug?



# What is a Drug Recognition Expert?



# DRE – 12-step process

1. Breath Alcohol Test
2. Interview of arresting officer
3. Preliminary examination
4. Examination of the eyes
5. Divided attention tests
6. Examination of vital signs
7. Darkroom examination
8. Examination of muscle tone
9. Examination of injection sites
10. Suspect's statement
11. DRE Opinion
12. Toxicology Examination



# Seven Drug Categories as Defined for Impaired Driving Charges

- Central Nervous System Depressants
- Inhalants
- Dissociative Anesthetics
- Cannabis
- Central Nervous System Stimulants
- Hallucinogens
- Narcotic Analgesics





# How about a Refusal?

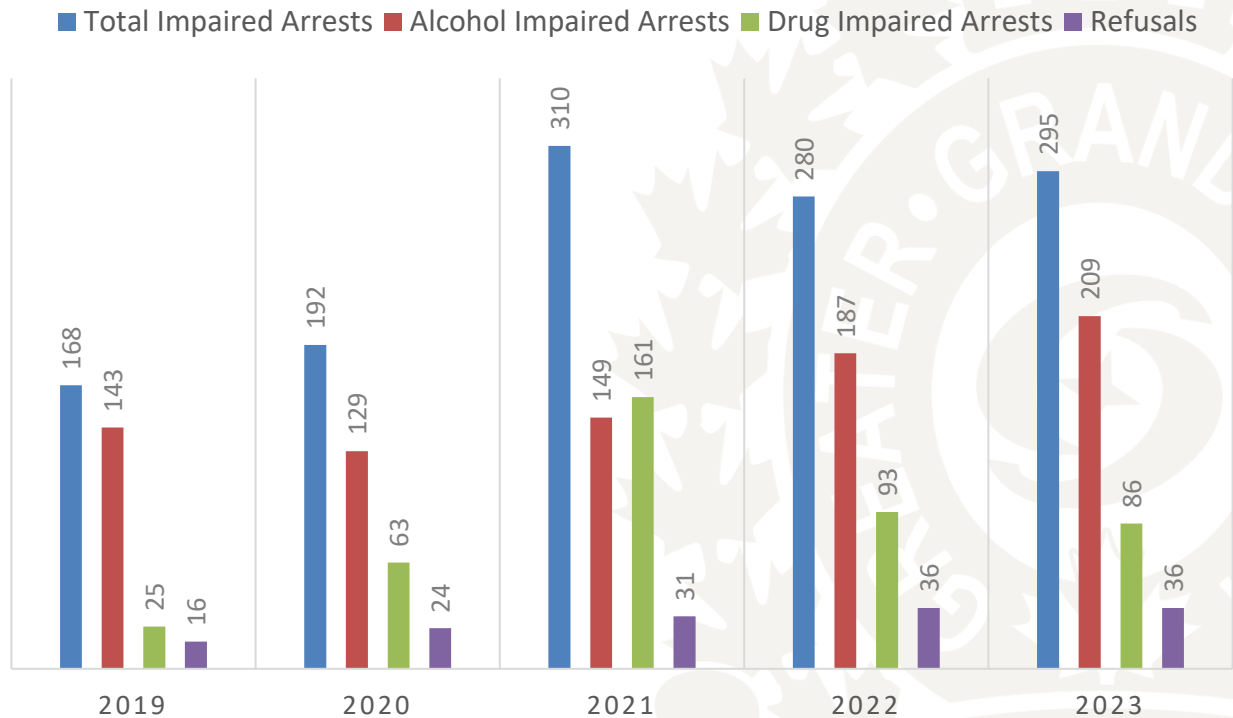


# Immediate Provincial Penalties:



# GSPS 5 Year Trends for Impaired Operation:

## CHART TITLE

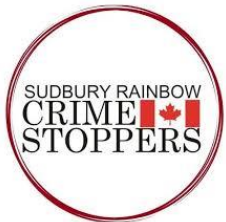


# Community Partners



**AGCO**

Alcohol and Gam  
Commission of O



# Questions

